

## SWING SERIES G23

### ELEGANT SOLUTION

Electro-mechanical reduction gear for swing gates for residential use up to 2,5 metres in width; ideal for gates with mean posts, it comes complete with release handle with protected and customized key. The main structure is in die-cast aluminium and the steel gears ensure lastingly constant and silent operation.

### VERSION

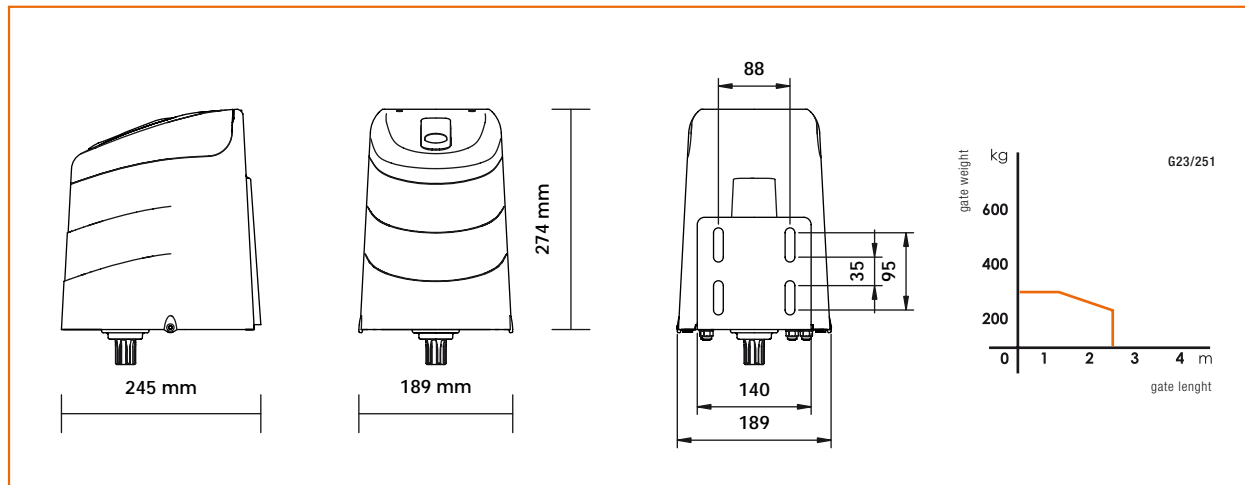
**G23/251** 230V irreversible • gate stop • with STD short arms



### TECHNICAL DATA

G23		G23/251
POWER SUPPLY	v	230
RATING	W	200
MAX THRUST	N	300
TIME FOR OPENING 90°	s	19
DUTY CYCLE	%	30
MOTOR OVERLOAD CUTOUT	°C	140
WORKING TEMPERATURE	°C	-20+70
PROTECTION RATING	IP	43
WEIGHT	Kg	13,5

### DIMENSIONS



### ACCESSORIES



**LT302**  
arm for short articulated joint

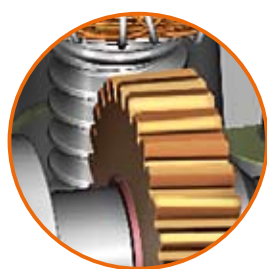
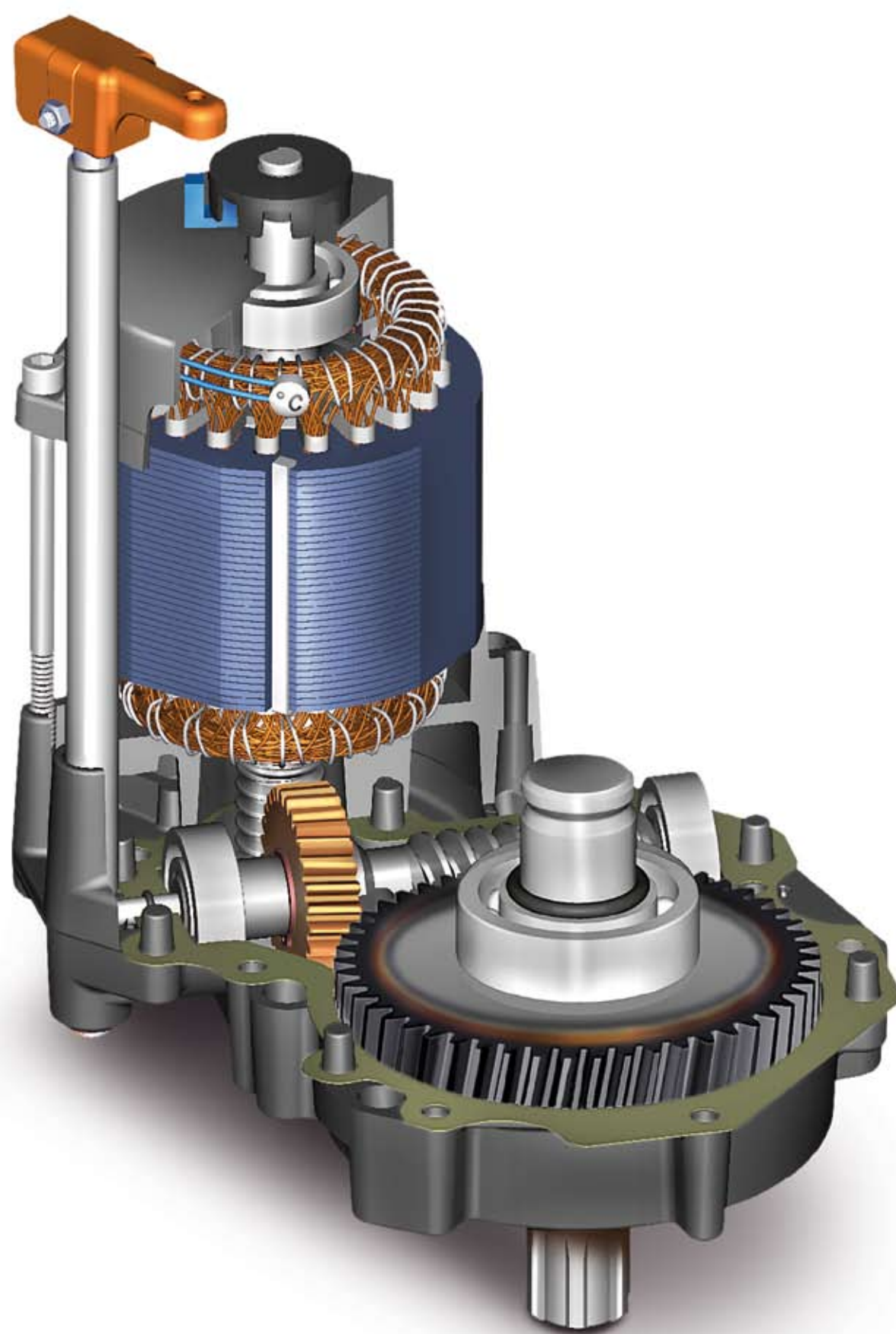


**KT218**  
gate pull bracket



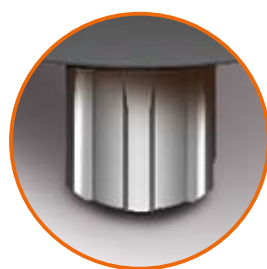
**KT219**  
plate for fixing to post

# "G23 style Roger Technology conceived with logic"



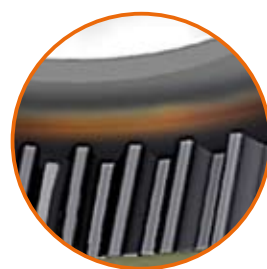
#### BRONZE AND STEEL FOR PERFECT MATING

Bronze crown gear and steel worm screw with precision finishing and hardening of the thread to ensure perfect, low-noise and durable mating.



#### DRIVE

The transmission of movement is entrusted to the spline shaft with UNI 221 profile, which ensures excellent mating.



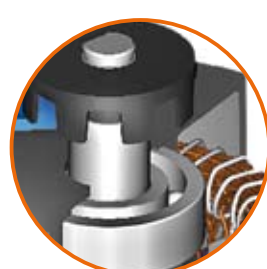
#### HARDENED STEEL

The gear subject to most stress undergoes heat treatment to make them strong and tough.



#### WORM

Worm screw in special steel with precision finishing and hardening of the thread.



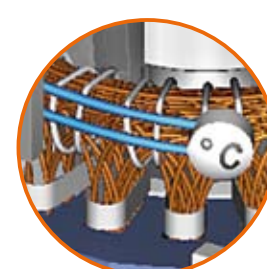
#### 1400 PERFECT AND SILENT REVSFOR MINUTE

2 special precision bearings for electric motors protected by double lip seals and lubricated for life with high temperature grease.



#### MANUAL RELEASE

release lever elegant and accessible, always within reach.



#### ALL-ROUND PROTECTION

Electric motor protected by a sensitive safety thermostat.