

SERIES H23 SWING GATE AUTOMATION

DEEP SOLUTION

Electro-mechanical reduction gear for swing gates for residential use up to 2,8 metres in width; ideal for gates with large posts, it comes complete with release handle with protected and customized key and is set up for external opening with pull cord. The main structure is in die-cast aluminium and the steel gears ensure lastingly constant and silent operation.

VERSION

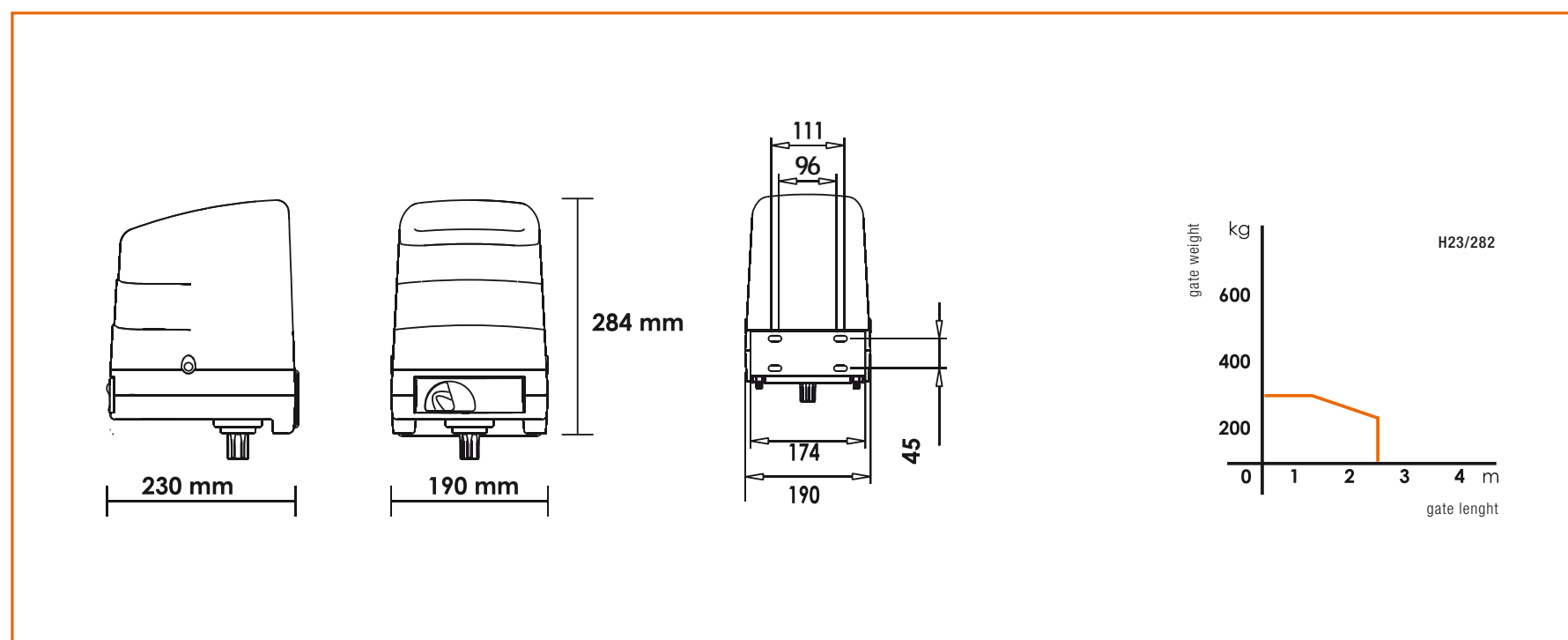
H23/282 230V • irreversible • gate stop • with STD short arms



TECHNICAL DATA

H23		H23/282
POWER SUPPLY	V	230/50Hz
RATING	W	160
MAX THRUST	N	280
PROTECTION RATING	IP	43
DUTY CYCLE	%	50
MOTOR OVERLOAD CUTOUT	°C	140
WORKING TEMPERATURE	°C	-20+70
TIME FOR OPENING 90°	s	12

DIMENSIONS



ACCESSORIES



LT302
arm for short articulated joint

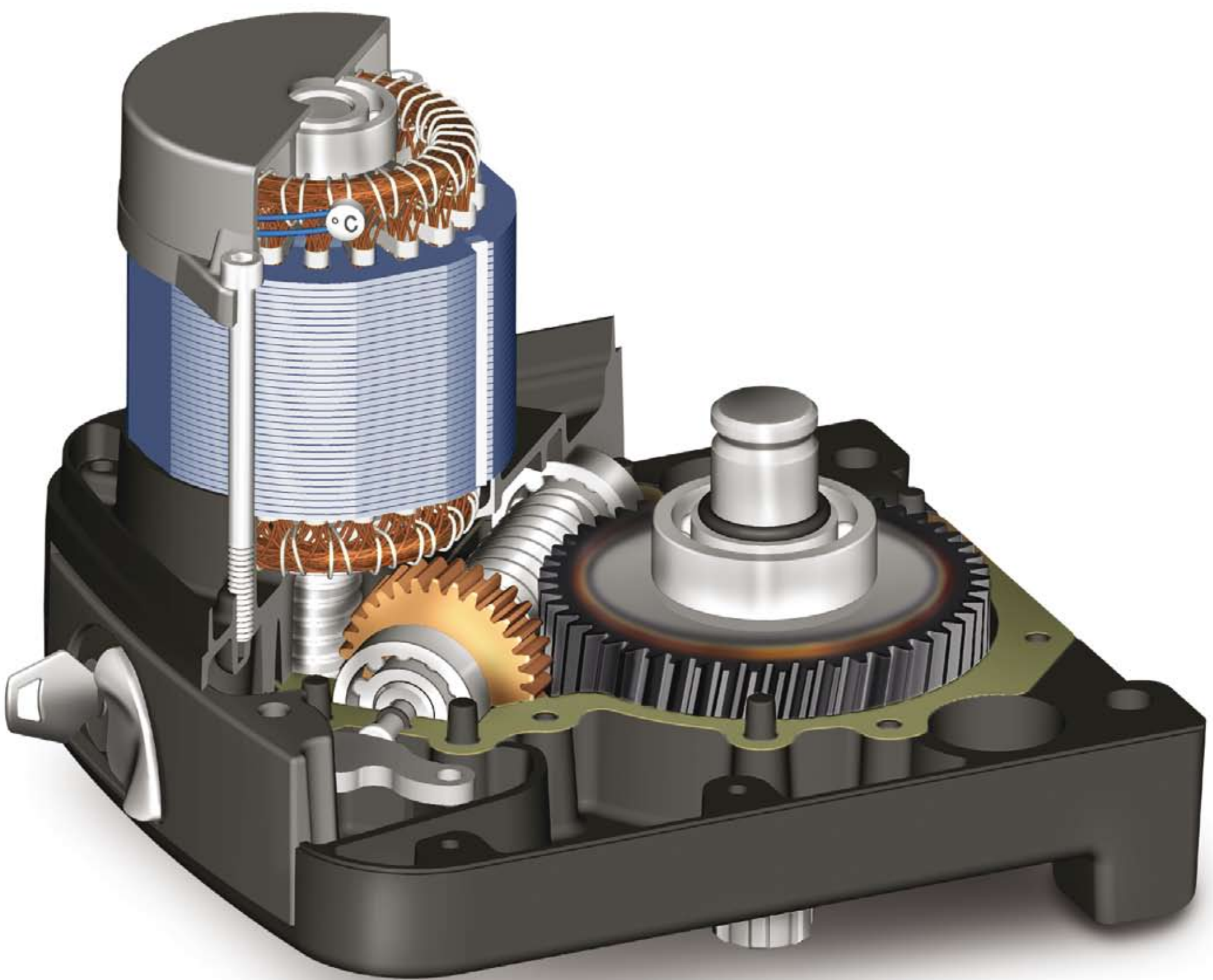


KT218
gate pull bracket

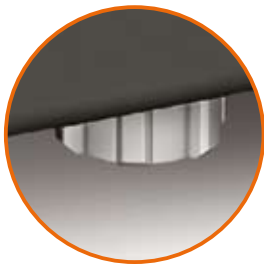


KT209
plate for fixing to post

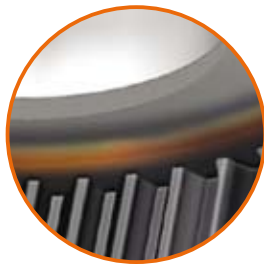
“H23 style Roger Technology conceived with logic”



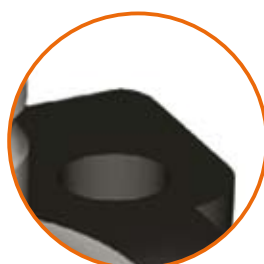
BRONZE AND STEEL FOR PERFECT MATING
Bronze crown gear and steel worm screw with precision finishing and hardening of the thread to ensure perfect, low-noise and durable mating.



DRIVE
The transmission of movement is entrusted to the spline shaft with UNI 221 profile, which ensures excellent mating.



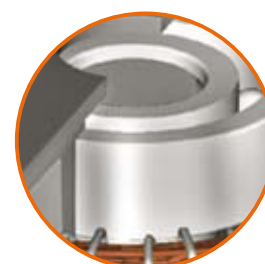
HARDENED STEEL
The gear subject to most stress undergoes heat treatment to make them strong and tough.



STURDY AND RELIABLE
The load-bearing structure and the bearing housings are made in die-cast aluminium.



WORM
Worm screw in special steel with precision finishing and hardening of the thread.



1400 PERFECT AND SILENT REV FOR MINUTE
2 special precision bearings for electric motors protected by double lip seals and lubricated for life with high temperature grease.



ALL-ROUND PROTECTION
Electric motor protected by a sensitive safety thermostat.