

SERIES H40 FOR SECTIONAL DOOR AUTOMATION

IDEAL SOLUTION FOR RESIDENTIAL SECTIONAL DOORS

Electro-mechanical chain system, ideal for residential sectional doors.
Exclusive, sturdy extruded aluminium rail, protects and guides the chain for long-lasting silent operation.

VERSIONS

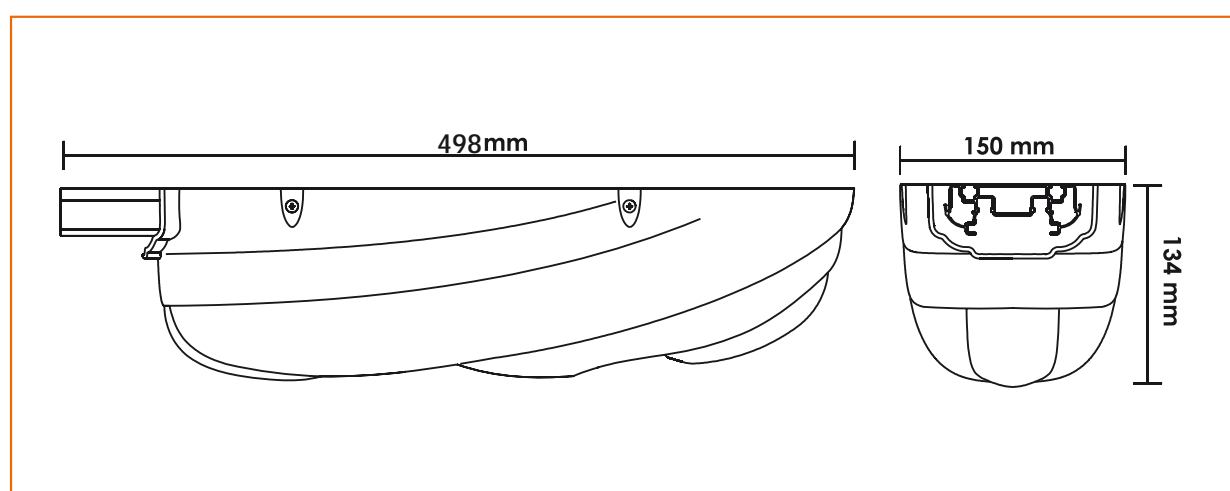
- R40/654** 230V • control unit with supports and accessories for H40 series • without motor
- H40/G3065M** chain track, length 3 metres • with motor 650N
- H40/G4065M** chain track, length 4 metres • with motor 650N



TECHNICAL DATA

H40		R40/654
POWER SUPPLY	v	230
LINE ABSORPTION	A	1,1
MAX THRUST	N	650
DUTY CYCLE	%	50
WORKING TEMPERATURE	°C	-20+70
PROTECTION RATING	IP	40
LOW SPEED	cm/s	9
STANDARD SPEED	cm/s	12
HIGH SPEED	cm/s	15
MOTOR INPUT	W	200

DIMENSIONS



ACCESSORIES

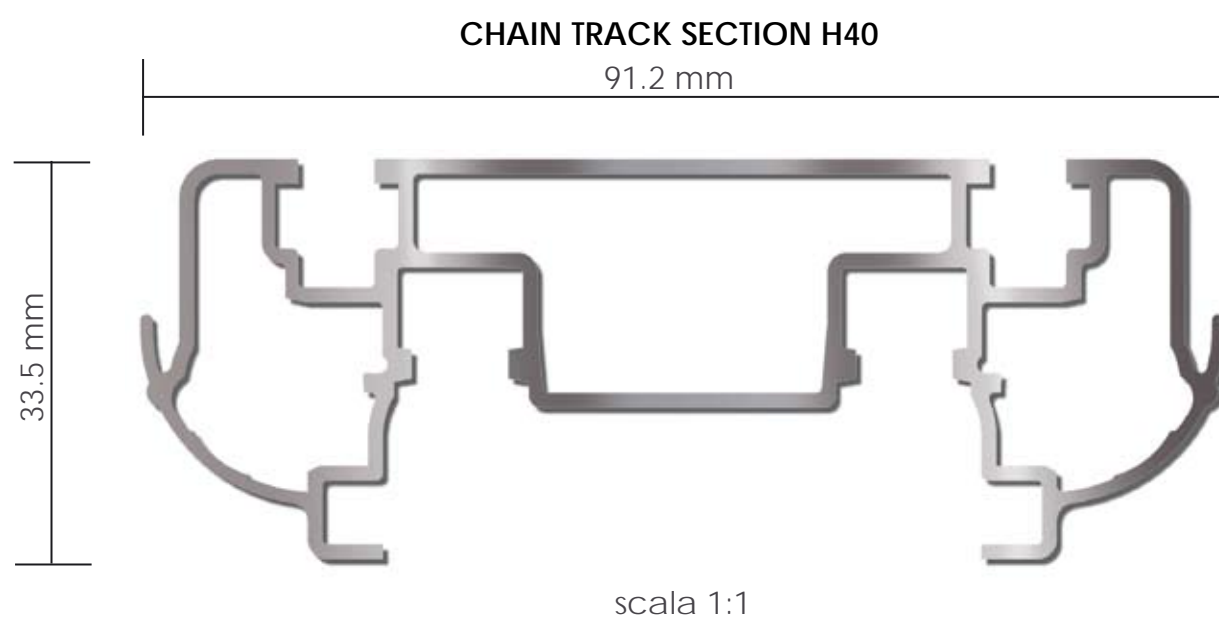


RL654
kit for release from outside
without handle



RL655
kit for release from outside
with handle

"H40 style Roger Technology conceived with logic"



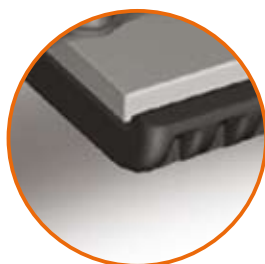
RELIABLE TRASMISSION SUPPORT

Transmission support system made with a chrome steel pulley complete with roller bearing and supporting pin in hardened and ground steel.



EMERGENCY RELEASE

Trolley complete with release lever for manual opening of the door in an emergency.



STOP FOR OPEN POSITION

Adjustable stop for opening movement, indispensable for the encoder positioning and safety system.



CONTROLLED REDUCTION GEAR

Encoder-controlled 24V dc motor ensuring an effective positioning and safety system.



STREAMLINED YET STURDY

Sturdy extruded aluminium rail just 35 mm thick, designed to guide the chain.



FULL FORCE TRASMISSION

Pre-tightened chain in hardened steel to ensure regular, long-lasting operation.