

SERIES R21 SWING GATE AUTOMATION

UNDERGROUND FOR STRENGTH

Electro-mechanical reduction gear for swing gates up to 3,5 metres in width. The sturdy die-cast aluminium housing has been structurally designed to withstand the high forces involved. When installed it is totally concealed inside the foundation box.

VERSIONS

R21/351 230V • irreversible standard

R21/361 230V • irreversible standard • 10 mt cable length

R21/362 230V • irreversible tandem • double bearing • 10 mt cable length

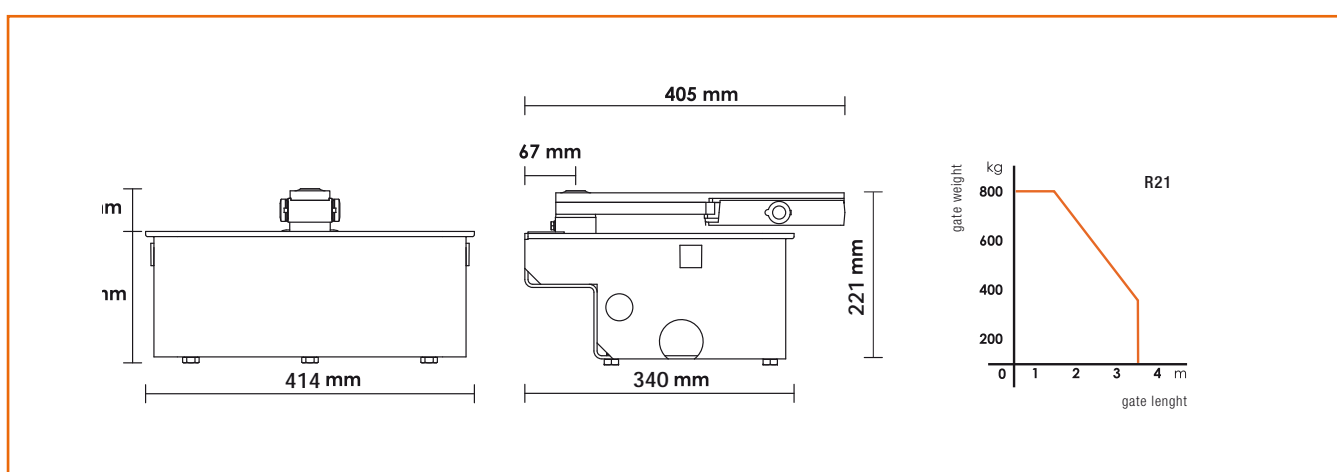
R21/368 230V • irreversible tandem • double bearing • 10 mt cable length • 6 poles



TECHNICAL DATA

		R21/351 R21/361 R21/362	R21/368
R21			
POWER SUPPLY	V	230	230
RATING	W	200	180
MAX THRUST	N	300	250
TIME FOR OPENING 90°	s	19	29
DUTY CYCLE	%	30	30
MOTOR OVERLOAD CUTOFF	°C	140	140
WORKING TEMPERATURE	°C	-20+70	-20+70
PROTECTION RATING	IP	67	67
OPERATOR WEIGHT	Kg	13,5	13,5

DIMENSIONS



ACCESSORIES



FU100
steel foundation box
and lid cold galvanised



FU101
steel foundation box
and lid hot galvanised



FU102
hot galvanised steel foundation
box and stainless steel
AISI 304 lid



FU103
stainless steel AISI 304
foundation box
and lid



LT300
hinge plate set
for opening up to 125°



LT301
hinge plate set
for opening up to 360°



RL650
release system for underground
installation with standard lever



RL651
release system
for underground installation
with key

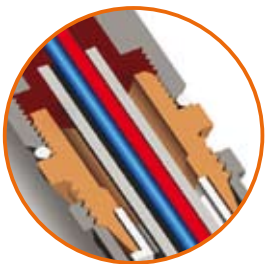
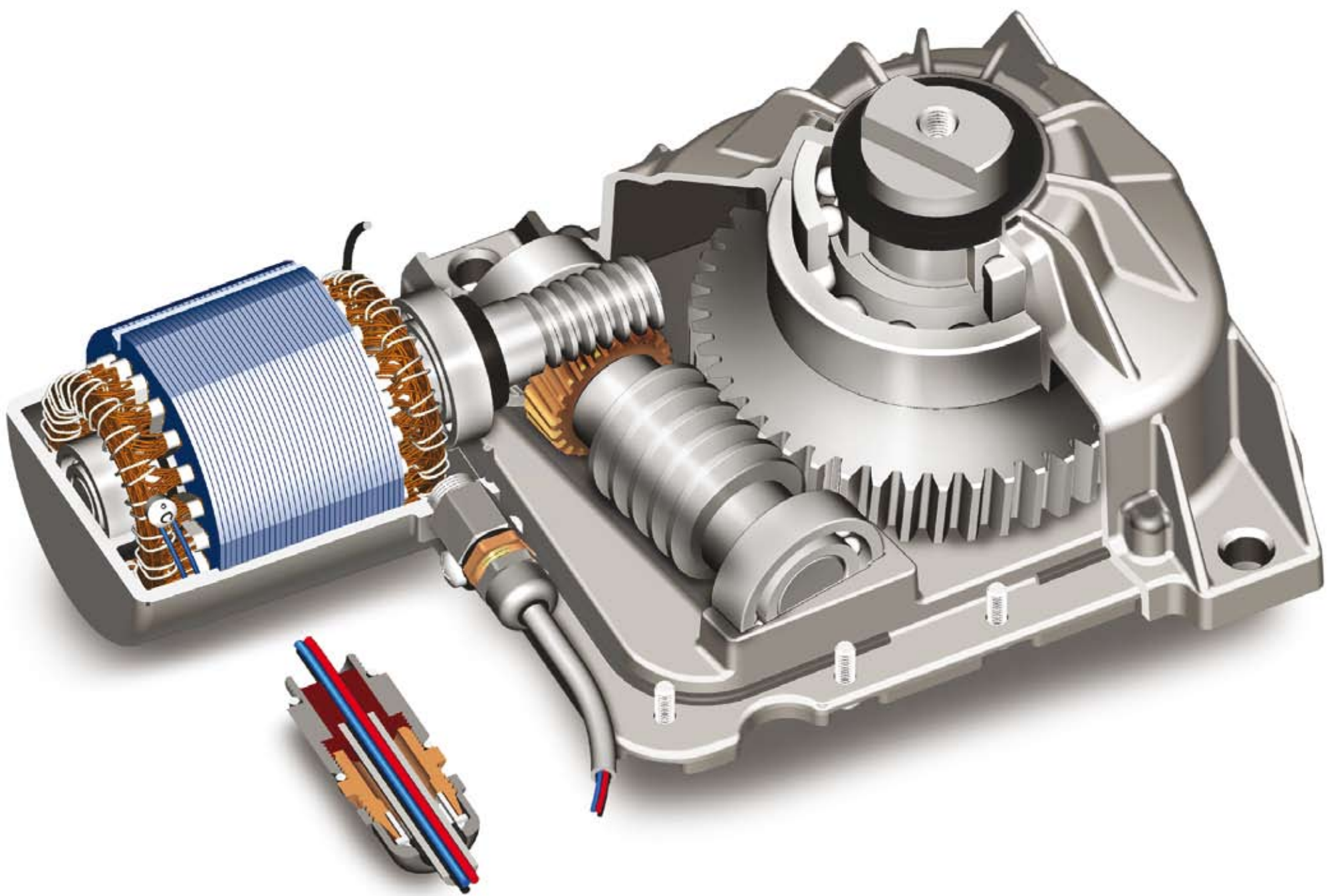


RL652
standard release lever
for underground installation



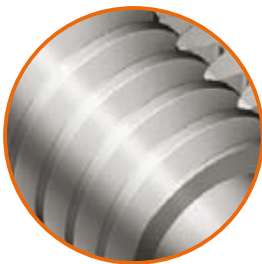
KT207
standard installation accessories
kit range R21

"R21 style Roger Technology conceived with logic"



FOR THE CABLE ONLY

Cable tray in steel and brass sealed with epoxy resins.



WORM

Worm screw in special steel with precision finishing and hardening of the thread.



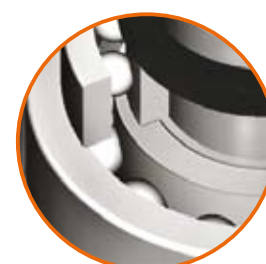
INOXIDIZABLE

Even the small things are important and so all the assembling screw are in stainless steel.



NO FEAR OF FATIGUE

The 150 mm diameter main gear is made in cast iron with structure in spheroidal graphite and is designed also for heavy duty.



TANDEM

Second bearing for those who want more.



DOUBLE PROTECTION

Special double lip seal to guarantee high degree of protection.



ALLUMINIUM WITH TITANIUM

Melting with titanium in controlled atmosphere results in highly compact pieces that are more water-proof.