

## SERIES R40 SECTIONAL DOOR AUTOMATION

### STURDY DRIVE SYSTEM

Electro-mechanical chain system, ideal for residential sectional doors.  
An exclusive, sturdy extruded aluminium rail, protects and guides the chain for long-lasting silent operation.

### VERSIONS

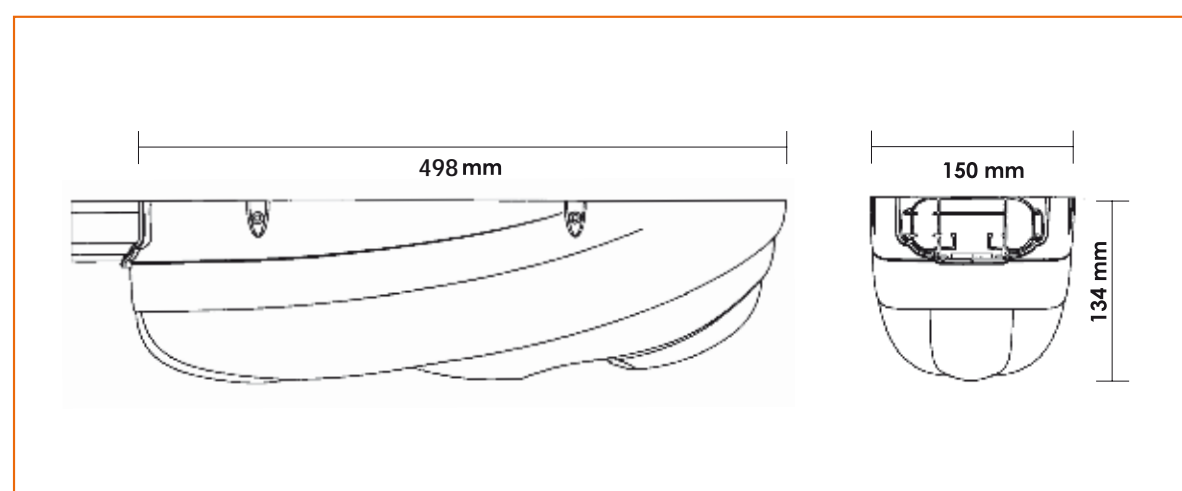
- R40/654** 230V • control unit with supports and accessories for R40 series • without motor
- R40/G3065M** chain track, length 3 metres • with motor 650N
- R40/G4065M** chain track, length 4 metres • with motor 650N



### TECHNICAL DATA

| R40                 |      | R40/654 |
|---------------------|------|---------|
| POWER SUPPLY        | V    | 230     |
| LINE ABSORPTION     | A    | 1,1     |
| MAX THRUST          | N    | 650     |
| DUTY CYCLE          | %    | 50      |
| WORKING TEMPERATURE | °C   | -20+70  |
| PROTECTION RATING   | IP   | 40      |
| LOW SPEED           | cm/s | 9       |
| STANDARD SPEED      | cm/s | 12      |
| HIGH SPEED          | cm/s | 15      |
| MOTOR INPUT         | W    | 200     |

### DIMENSIONS



### ACCESSORIES

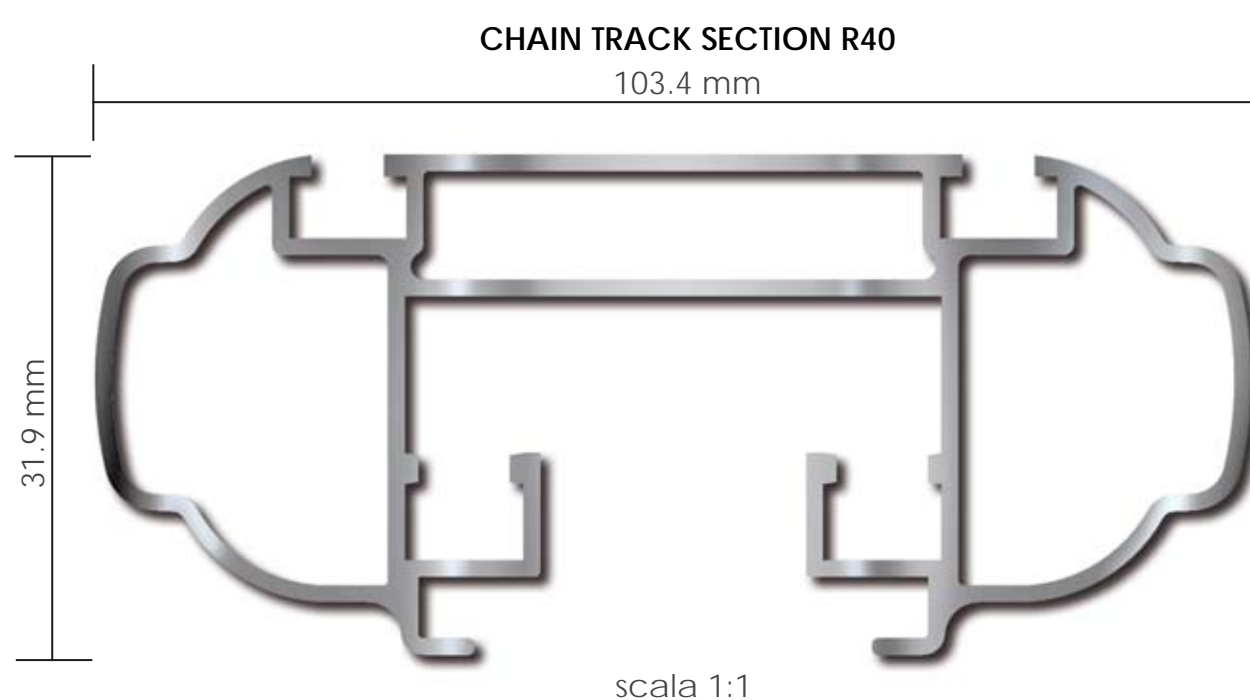
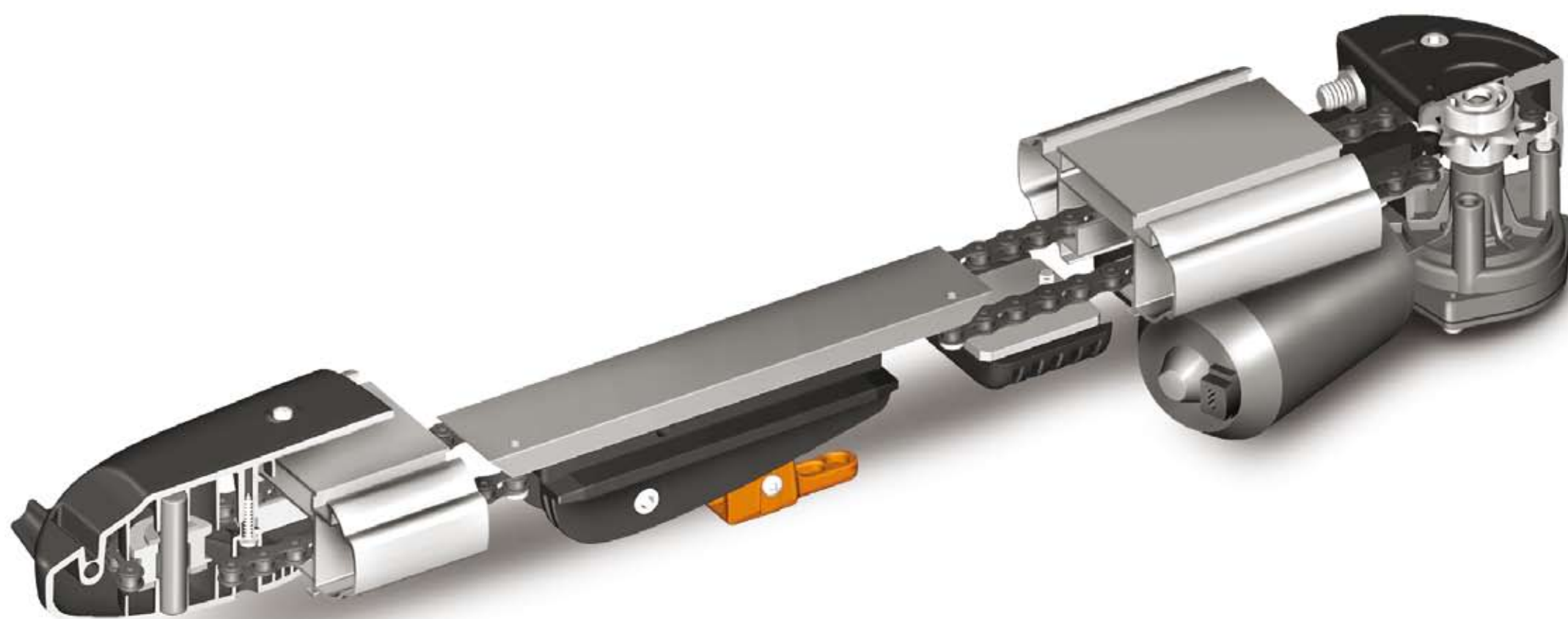


**RL654**  
kit for release from outside  
without handle



**RL655**  
kit for release from outside  
with handle

# "R40 style Roger Technology conceived with logic"



#### RELIABLE TRASMISSION SUPPORT

Transmission support system made with a chrome steel pulley complete with roller bearing and supporting pin in hardened and ground steel.



#### EMERGENCY RELEASE

Trolley complete with release lever for manual opening of the door in an emergency.



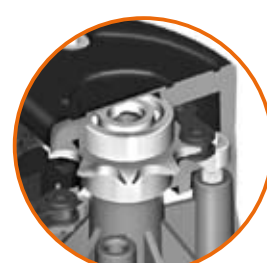
#### STOP FOR OPEN POSITION

Adjustable stop for opening movement, indispensable for the encoder positioning and safety system.



#### CONTROLLED REDUCTION GEAR

Encoder-controlled 24V dc motor ensuring an effective positioning and safety system.



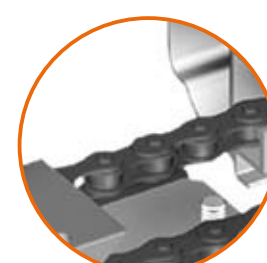
#### UNBENDING

An additional ball bearing to support the reduction gear shaft and guarantee long-lasting trouble-free operation.



#### STURDY AND INFLEXIBLE

Sturdy extruded aluminium track designed to guide and protect the fully concealed chain.



#### FULL FORCE TRASMISSION

Pre-tightened chain in hardened steel to ensure regular, long-lasting operation.