

SERIES R41 OVERHEAD DOOR AUTOMATION

COMPACT ELECTRO-MECHANICAL SYSTEM

Electro-mechanical reduction gear ideal for overhead doors measuring up to 8 square metres, complete with chromate metal release handle for opening from inside and set up for opening from outside. The die-cast aluminium main structure and the steel gears ensure long-lasting constant and silent operation.

VERSIONS

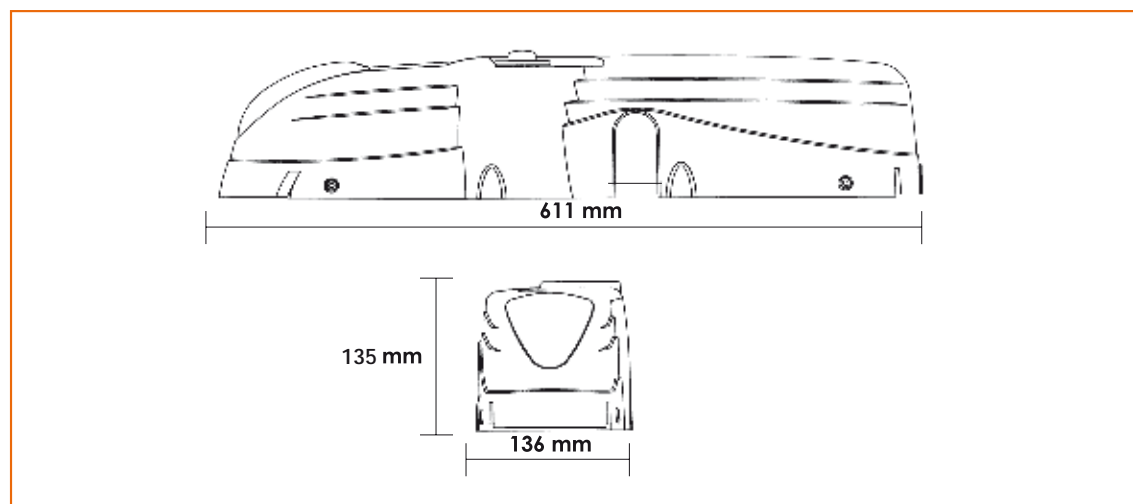
- R41/820** 230V • irreversible • without control unit • gate stop
- R41/821** 230V • irreversible • with control unit • gate stop
- R41/822** 230V • irreversible • motor 6 poles • without control unit • gate stop
- R41/823** 230V • irreversible • motor 6 poles • with control unit • gate stop



TECHNICAL DATA

R41		R41/820 R41/821	R41/822 R41/823
POWER SUPPLY	v	230	230
RATING	W	200	180
MAX THRUST	N	380	250
DUTY CYCLE	%	40	30
MOTOR OVERLOAD CUTOUT	°C	140	140
WORKING TEMPERATURE	°C	-20+70	-20+70
PROTECTION RATING	IP	40	67
OPERATOR WEIGHT	Kg	8	13,5
MAX SIZE CAPACITY	Mq	8	8

DIMENSIONS



ACCESSORIES



KT216
supporting plate
L.619 mm



KT217
supporting plate
L.2000 mm



LT304
short telescopic arm 600 mm
with splined bushing
and plates for welding on



LT305
long telescopic arm 800 mm
with splined bushing
and plates for welding on



LT306
drive shaft L.200 mm
complete with support



LT307
drive shaft L.1500 mm
complete with support



LT308
drive shaft L.2000 mm
complete with support



RL653
kit for release from outside
with key and extension



RL656
kit for release from outside
with key



RL657
kit for release from outside
without handle



LT309
short telescopic arm 600 mm
with cylindrical bushing
and plates for welding on



LT310
long telescopic arm 800 mm
with cylindrical bushing
and plates for welding on



LT311
short telescopic arm 600 mm
and plates for welding on

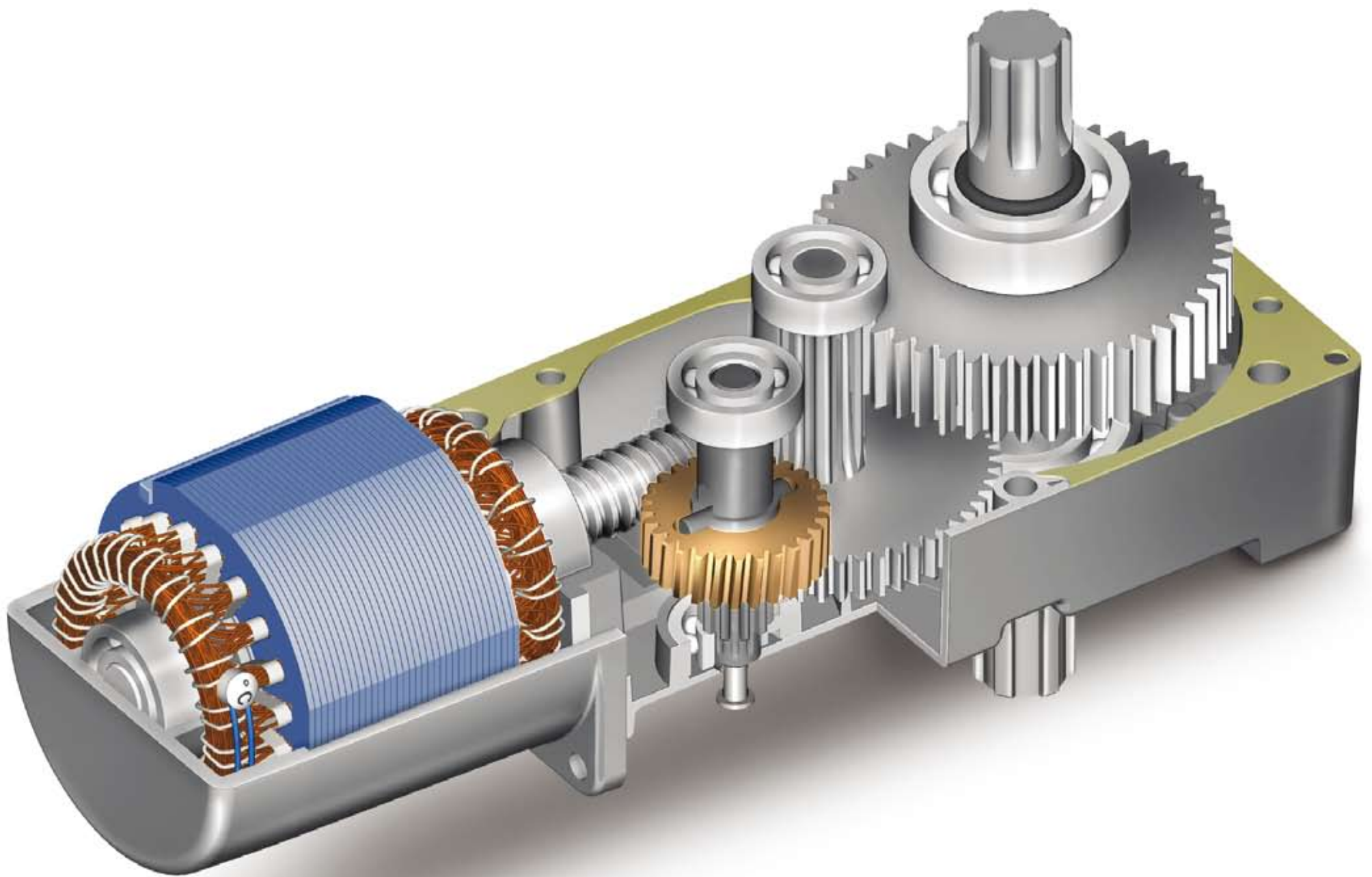


LT312
braccio telescopic lungo
long telescopic arm 800 mm
and plates for welding on



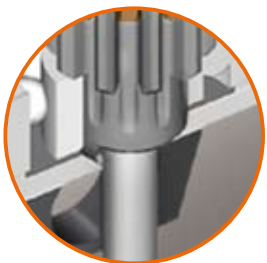
LT313
rough splined bushing
for welding on

"R41 style Roger Technology conceived with logic"



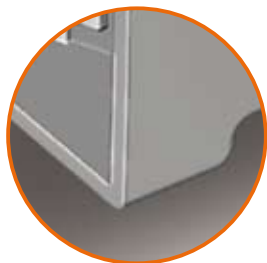
PRECISELY CENTRED

All the housings of the bearings and the motor assembly are turned and ensure long-lasting constant, perfect and silent rotation.



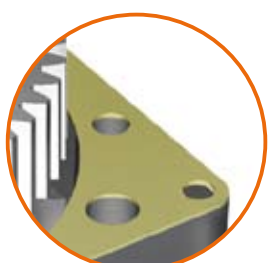
HARDENED STEEL

The two gears subject to most stress undergo heat treatment to make them strong and tough.



STURDY AND RELIABLE

The load-bearing structure and the bearing housings are made in die-cast aluminium.



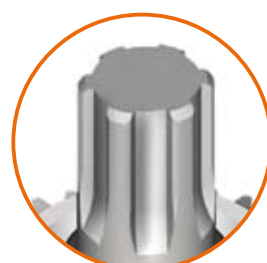
PERFECT COUPLING

The two shells, meticulously milled and coupled with a gasket inserted between them, ensure perfect coupling and excellent grease tightness.



STEEL

All the gears are in steel and mounted on ball bearings lubricated with fluid grease; this ensures no noise and maximum life.



DRIVE

The transmission of movement is entrusted to the spline shaft with UNI 221 profile, which ensures excellent mating.



1400 PERFECT AND SILENT REVSPOR MINUTE

2 special precision bearings protected by double lip seals and lubricated for life with high temperature grease.